



SAHVIA

*design & beyond*



SAHVIA  
*design & beyond*

**INTRODUCTION**

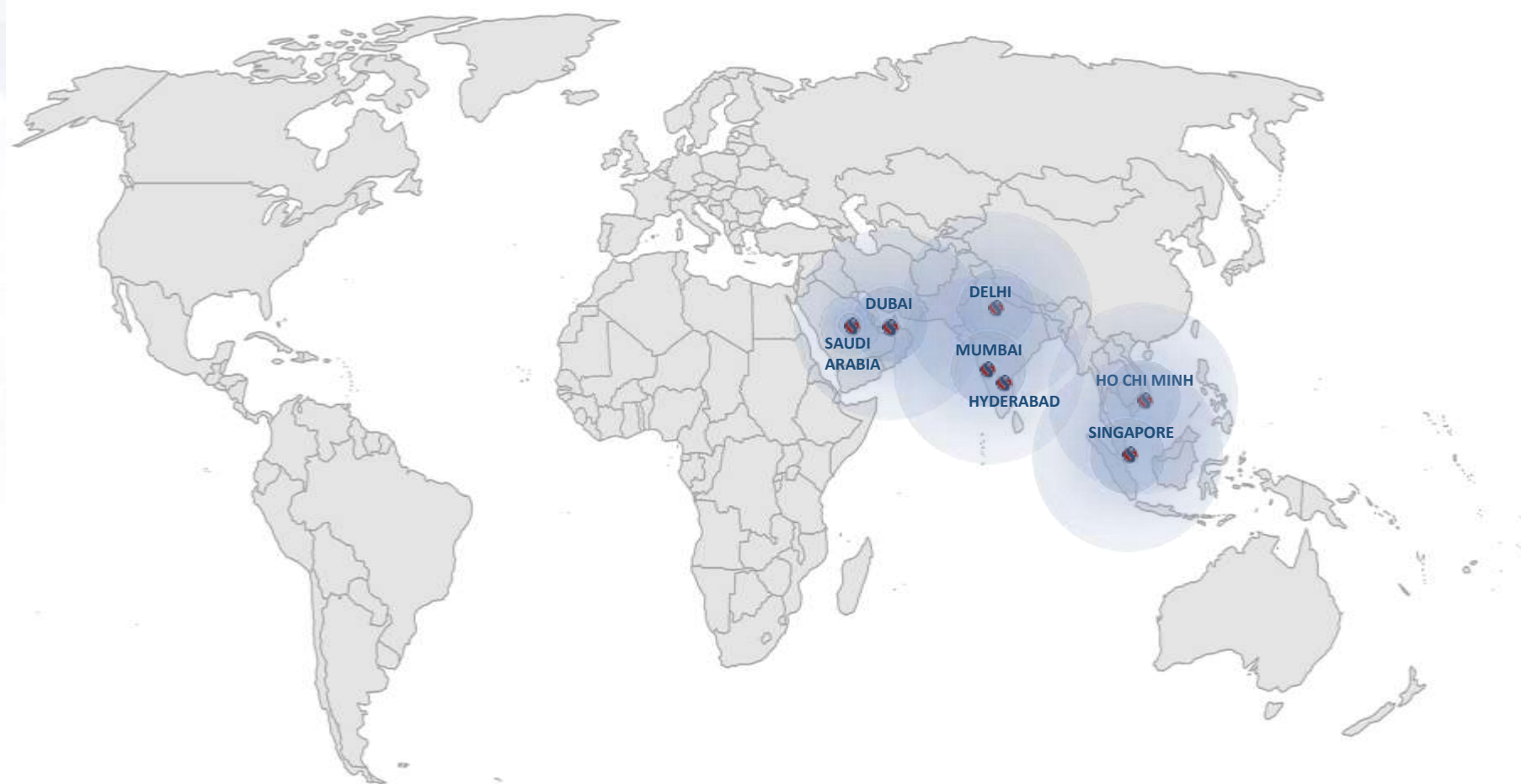


*SAHVIA is a group of experienced facade & lighting consultants. With high advanced technology and expertise, SAHVIA technically creates high-performance, sustainable building envelope and bring esthetic and cost-effective lighting solutions to Developers, Architects & Contractors.*



# COMPANY LOCATIONS

 *SAHVIA is present all over the world with 6 offices in 5 different countries.*





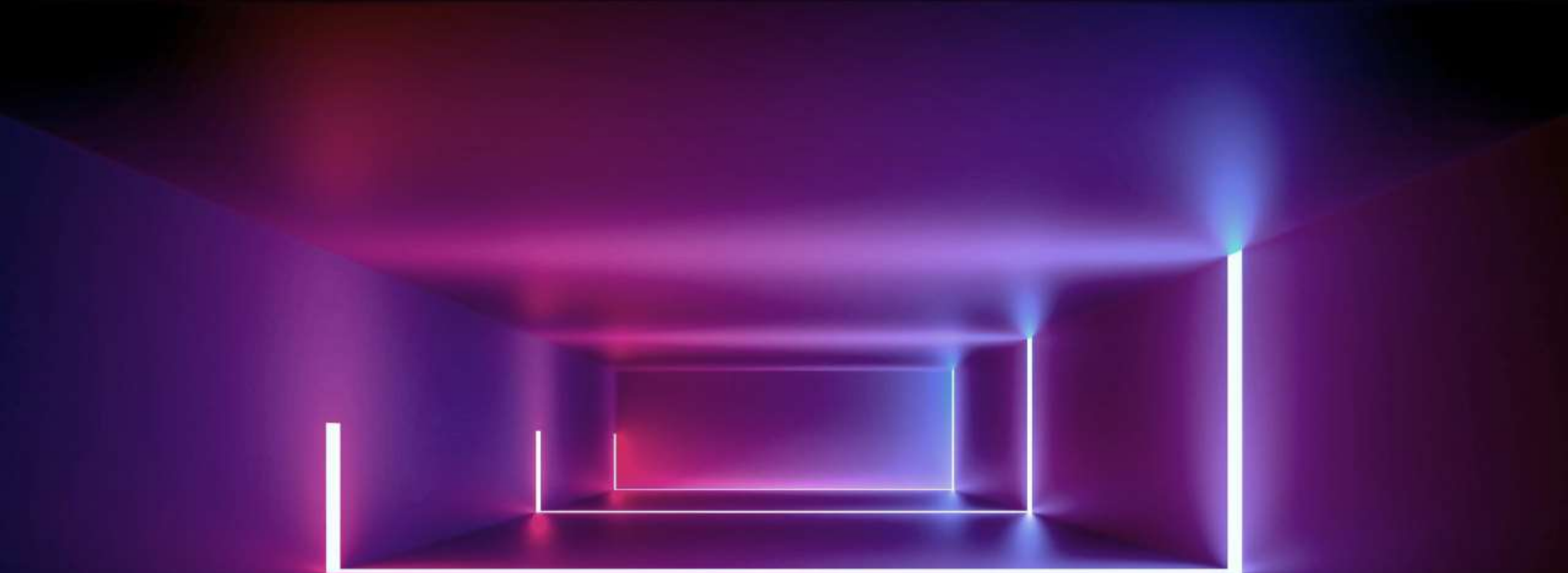
## *SAHVIA studies*

*the utilization of the most appropriate materials and systems, taking into account the local regulations, the projects' contexts and the Client's requirements.*





 SAVHIA, beside the **traditional** criteria, such as safety, cost effective design and aesthetics, leads to optimized facade having **energy savings**, thermal, acoustic and visual comforts standards, technological and efficient equipment systems to clean and repair the facades.



*SAHVIA is also specialized in **lighting** offering customized, artistic and unique solutions, in line with the architectural design of the project. Lighting Design for facades, as well as for interiors, squares and places of urban interest, creating unique atmospheres.*



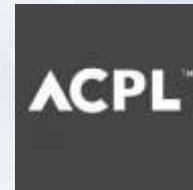
[www.sahvia.com](http://www.sahvia.com)



SAHVIA can count so many **architectural projects** carried out in **several years** of activity at the service and with the cooperation with the most prestigious firms in the architectural and construction engineering sector.



 **SAHVIA** is working with well known and prestigious *architects* listed below and many more.





www.sahvia.com

 SAHVIA is working with very known, prestigious *investors & PMC's* listed above and many more.

# Certificate of Registration

This is to Certify that  
Quality Management System of

## SAHVIA FACADE PRIVATE LIMITED

UNIT NO. 302, BUILDING NO.1 (61) SECTOR - II, MILLENNIUM BUSINESS  
PARK, MAHAPE, NAVI MUMBAI - 400710, MAHARASHTRA, INDIA.

has been assessed and found to conform to the requirements of  
**ISO 9001:2015**  
for the following scope :

ENGINEERING, CONSULTANCY, PROJECT MANAGEMENT SERVICES FOR  
FACADE, LIGHTING DESIGN FOR FACADE, INTERIOR & LANDSCAPE.

Certificate No	: 211QH72	Issuance Date	: 13/09/2021
Initial Registration Date	: 13/09/2021	Date of Expiry	: 12/09/2024
1st Surve. Due	: 13/08/2022	2nd Surve. Due	: 13/08/2023



Director



AQC MIDDLE EAST LLC



ACCREDITED  
Management Systems  
Certification Body  
MSCB-119



Head Office: Office No. 02, Ground Floor, Sharjah Media City, Sharjah, UAE. e-mail: [info@aqccert.com](mailto:info@aqccert.com).

Key Location: A-001, Sector - 2, Noida, Uttar Pradesh, 201301, India.

\*Validity of the certificate is subject to successful completion of surveillance audits on or before of the date. In case surveillance audit is not allowed to be conducted, this certificate shall be suspended/terminated.

Get Online Verification: Please check the validity of certificate at <http://www.aqccert.com/verifications.aspx> or [www.aqccert.com](http://www.aqccert.com) at the Certificate is the property of AQC Middle East LLC and shall be returned immediately when demanded.



SAHVIA hold the **ISO9001:2015** Certificate of  
the Quality Management System concerning:

engineering,  
consultancy,  
project management service for façade,  
lighting design for façade,  
Interior,  
landscape.



SAHVIA  
*design & beyond*

**KEY PERSONNELS**



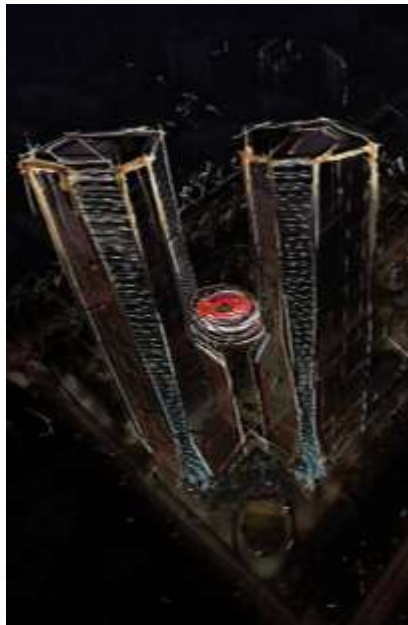
**Mr. AHMED ALI SUMAIR**  
MBA – Construction Management  
Director

Mr. **Ahmed Sumair** holds as Director for **SAHVIA**. Involved in many high end and complex projects in India, Middle East, Thailand, Cambodia and UK (London) for more than 16years.

He was associated with multinational façade consultancy firms, contributing his design expertise for various high-end projects globally. With his design management and value engineering consideration helps for better execution. He has experience in Engineering projects; Residential, Hospitality, IT, Industrial including high rise buildings and complex projects which evolve on Architectural designs.

A few to name here below:

- British Broadcasting Centre – UK
- HHR Tower – Dubai
- Siena residential – INDIA
- Nathani Heights – Mumbai
- Sienna Towers – Mumbai
- CMC Office Building – Vietnam
- D-tech Tower - Vietnam
- Lancaster Legacy – Vietnam
- Sunbay, Crystal Bay - Vietnam
- Capitaland – Chennai
- Advant IT Park – Delhi
- Cyberthum - Delhi
- Emaar Xcelus - Delhi and many more.....





**Mr. Ataur Rahman**  
Mechanical Engineer  
Associate Director - GULF

Mr. **Ataur Rahman** holds as Associate Director for **SAHVIA**. The main characteristics of his work is design engineering in multi-use structures like mixed used development, shopping malls, high rise office towers, boutique commercial and residential villas, public space and many more.

Below are some of his works :

- Al Helo Villa U.A.E
- Dubai Hills Mall Dubai U.A.E
- Harbour Views Dubai Creek U.A.E
- Expo 2020 THEMATIC DISTRICTS MOCK-UP, Dubai, U.A.E
- La Mer Dubai Water Park, Jumeirah Open Beach, Dubai, U.A.E
- La Mer Jumeirah Open Beach, Dubai, U.A.E
- Dubai festival city Dubai, U.A.E
- Bright Start hotel Sheik D.I.F.C Dubai, U.A.E
- Al-Habtoor City, Sheik Zayed Road Dubai, U.A.E





**Mr. Mohammad Mahmood**

B.E. Mechanical

Director - Design Head

Mr. **Mahmood** holds as Design Manager for **SAHVIA**. Involved in many high end and complex projects in India, Middle East and South-East Asia for more than 18years.

He was associated with multinational façade consultancy firms in middle east, contributing his design expertise for various high-end projects globally. With his design management and value engineering consideration helps for better execution. He has experience in Engineering projects; Residential, Hospitality, IT, Industrial including high rise buildings and complex projects which evolve on Architectural designs.

A few to name here below:

- Jewel Tower - Dubai
- Etihad Complex – Dubai
- Al-Tayer Tower – Dubai
- GOA International Airport
- Madani Villa's – Dubai
- Eldyne Towers
- HHR Towers
- Al-Raha Beach Hotel – Abu Dhabi
- Unitech – Delhi
- Kiosk – Dubai Mall
- Advant IT Park - Delhi





Mr. Tommaso Frizzale

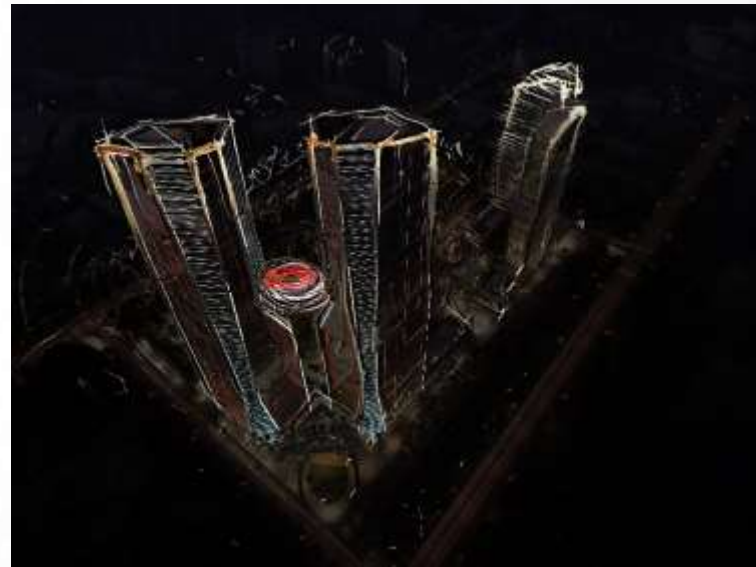
M.Arch

Sr. Associate Architect

Mr. **Tommaso** holds as Sr. Associate Creative Architect for **SAHVIA**. He is an Italian Architect. He has done his masters in scenography. The main characteristics of his work is a combination of personal minimalism and classical cues with creative fantasy and originality in contemporary projects. With more than 18 years of experience, he collaborated for several international firms: SOM, RTKL, AEDAS, BIAD, Portman, CSCEC, AECOM, Critic, Zumtobel, etc.

In these years of experiences as Project Leader the practice is quite diversified:

- Retail – Shopping Centers (interior details & facades)
- Hotels & Resorts (interior details & facades)
- Office Building (Low & High Rise)
- Large scale and urban projects
- Artificial islands
- Airports
- Residentials
- Landscapes







**Ms. SAUMYA CHAWLA**

B.Arch  
Sr. Associate Architect

Ms. **Saumya** holds as Associate Architect for **SAHVIA**. Involved in many high end and complex projects in India, Middle East, Australia, U.S. and South-East Asia for more than 8years.

She was associated with multinational Design consultancy firms, contributing her design expertise for various high-end projects globally. With her design & time management and project management consideration helps for better execution. She has experience in projects like; Residential, Commercial, Hospitality, IT, Industrial, Mixed-used including high rise buildings and complex projects which evolve on Architectural designs.

A few to name here below:

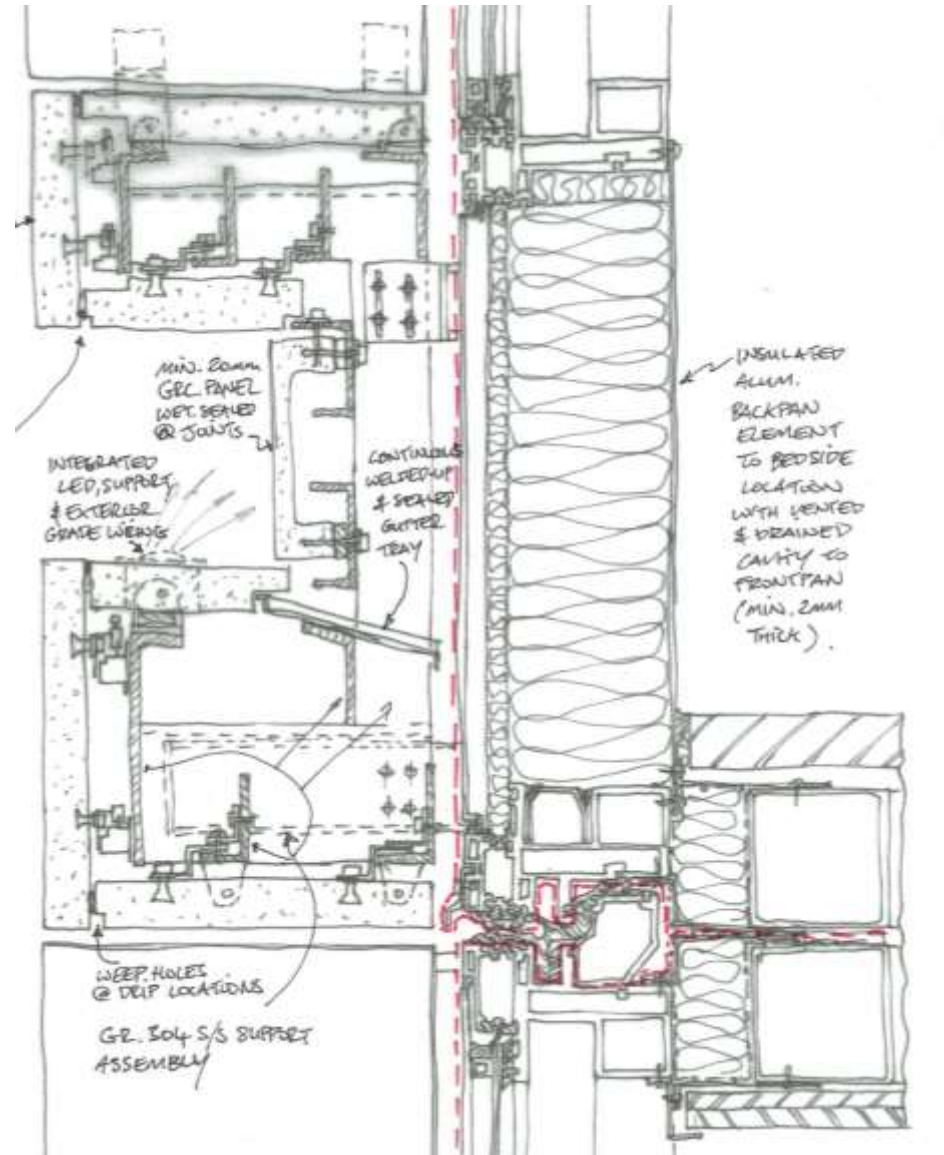
- The Crown Resorts – Sydney
- Crown Promenade – Melbourne
- Crown Towers – Melbourne
- Crown Casino – Melbourne
- Grand Hyatt – Kuwait
- Four Seasons – Kuala Lumpur
- King Crown Infinity – Vietnam
- Lancaster Legacy - Vietnam
- D-tech Tower – Vietnam
- Champarama CT-10 – Vietnam
- Cyberthum - Delhi
- Emaar DigiHomes – Delhi
- Emaar Xcelus – Delhi
- Emaar Colonnade – Delhi
- Maple Tree – Mumbai



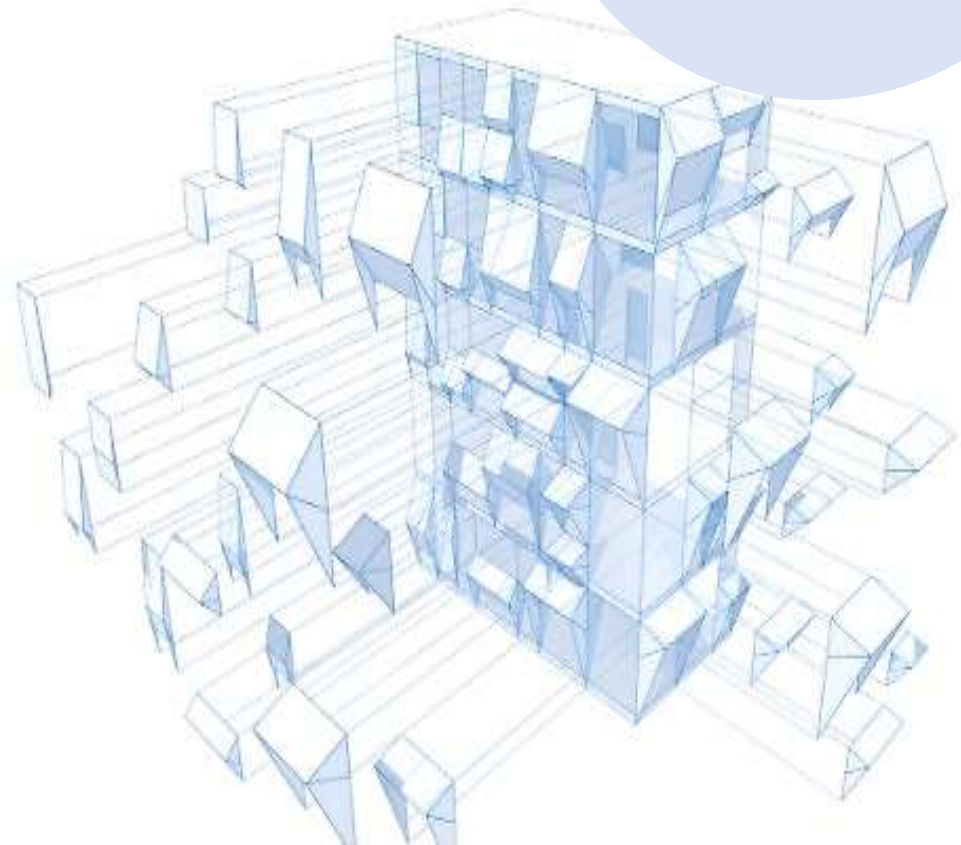


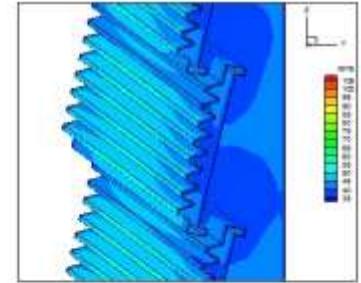
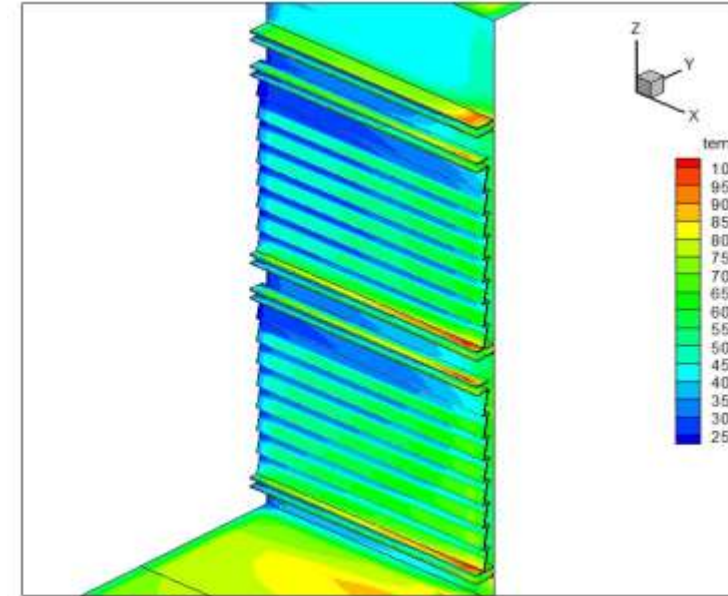
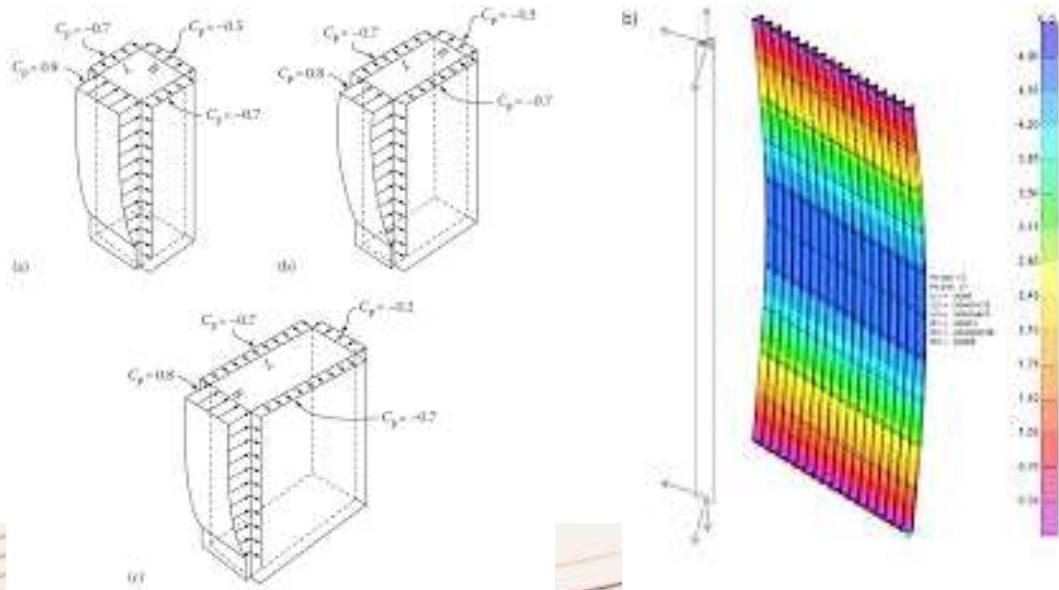
SAHVIA  
*design & beyond*

**FACADE CONSULTANCY SERVICES**

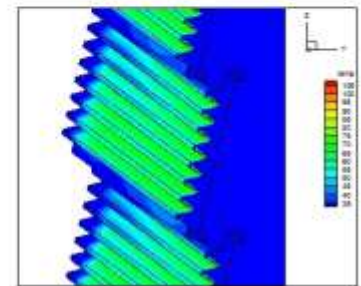


# FAÇADE STUDIO



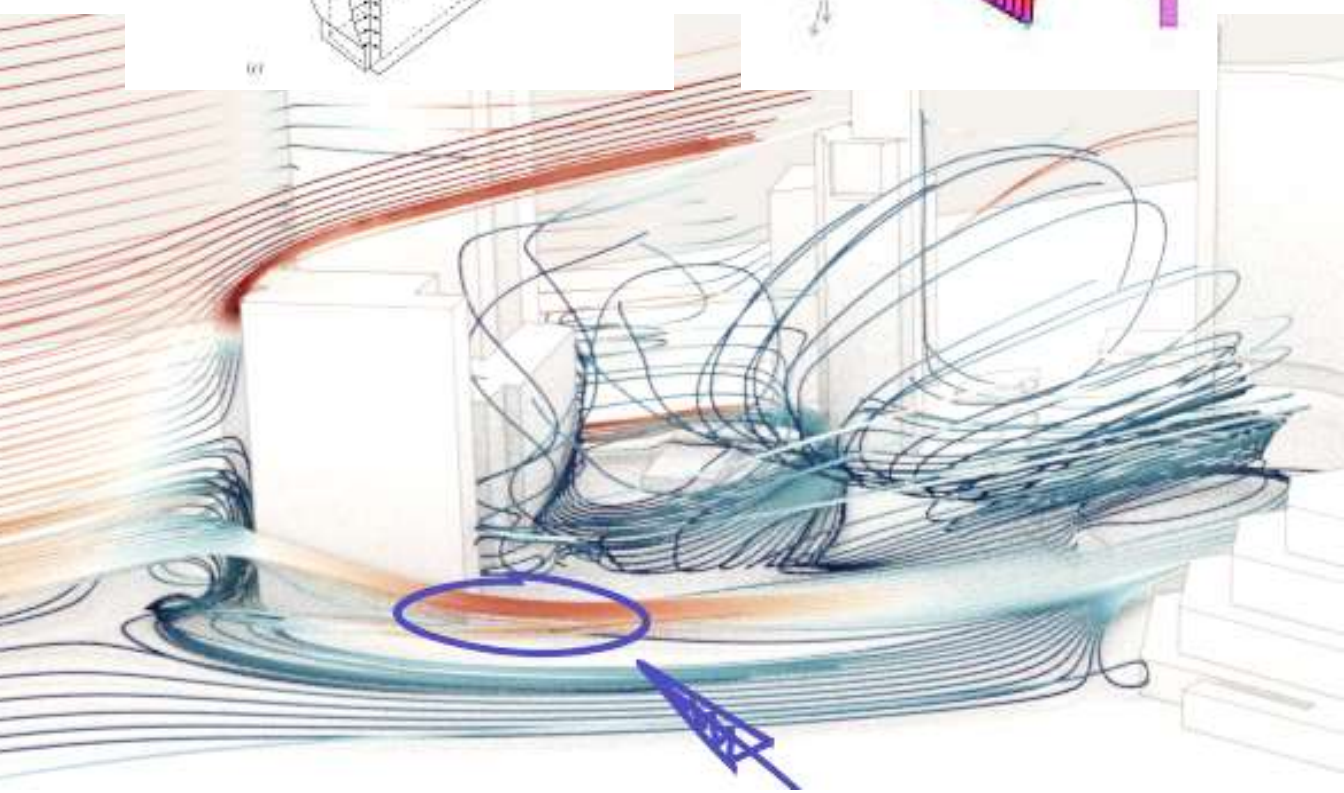


Temperature In Summer



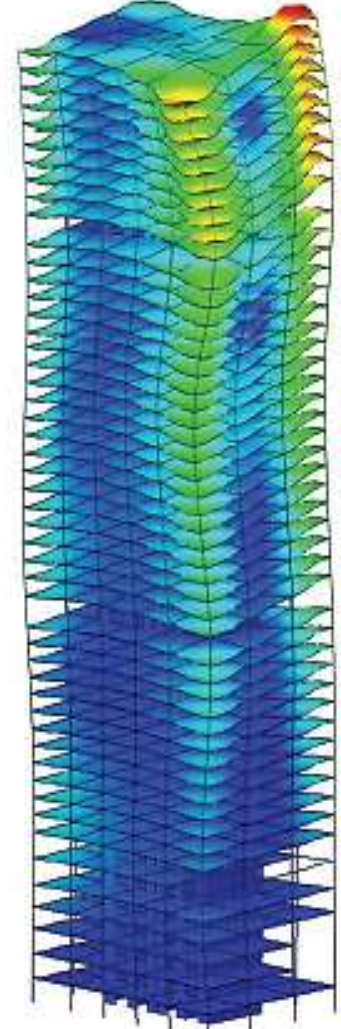
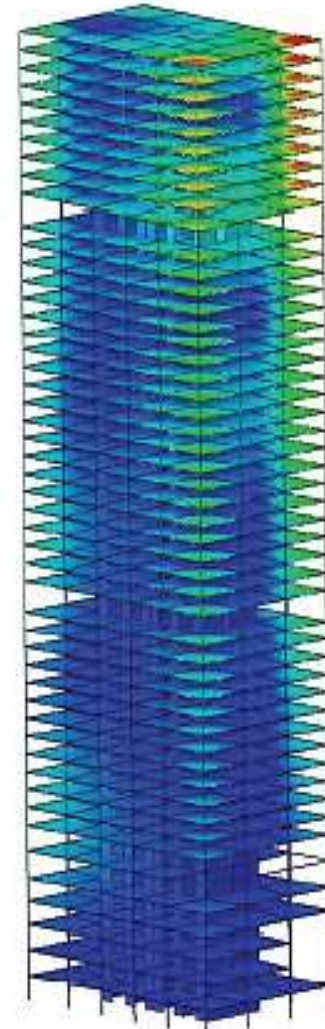
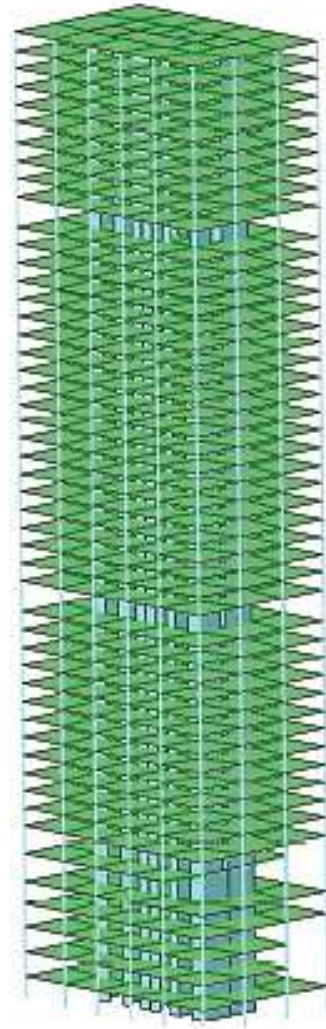
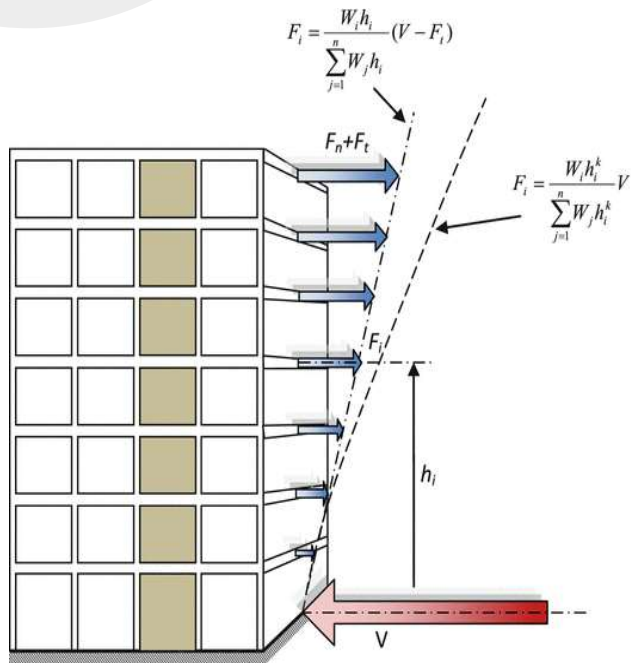
Temperature In Winter

Temperature In Summer

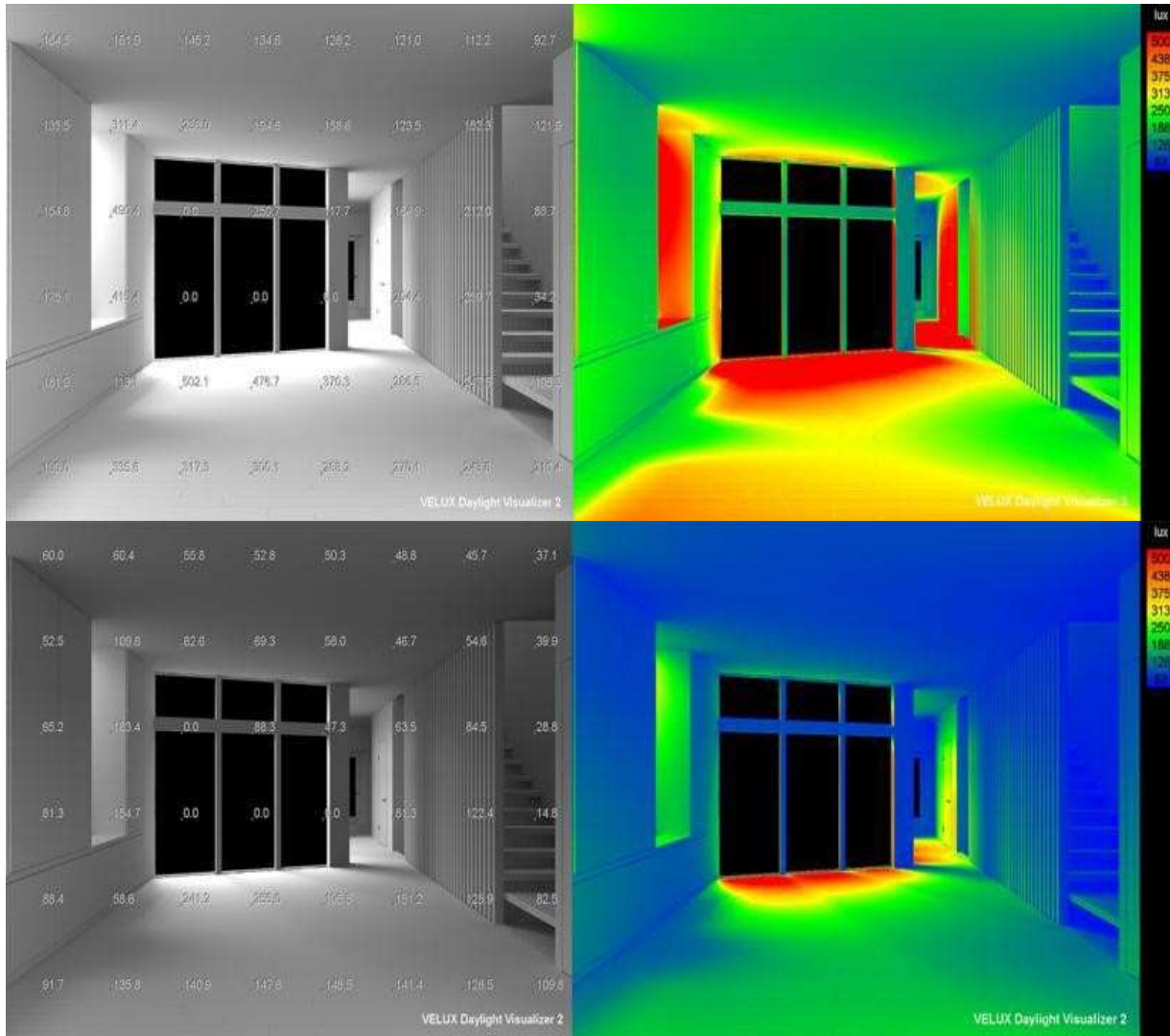


WIND LOAD  
+  
TEMPERATURE CONTROL

# SEISMIC ANALYSIS



# LIGHTS STUDIES



## SHADING ANALYSIS

It is important to analyze shading caused by Surrounding objects and/or vegetation, shading on the building in All seasons. With Software we generate the exact depth of shade on the facade. To analyze the Design of Shading, we consider:

- 1) Climate Consideration.
- 2) Visual and Thermal Comfort.

## INTERIOR LIGHT ANALISYS

Day lighting analysis is the control of admission of natural light and direct sunlight and diffuse skylight into a building. By providing a direct link to the dynamic and perpetually evolving patterns of outdoor illumination, day lighting helps create a visually stimulating and productive environment for building occupants, while reducing as much as one-third of total building energy costs.

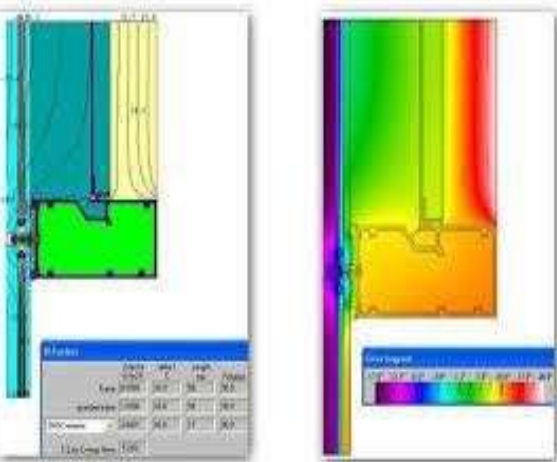
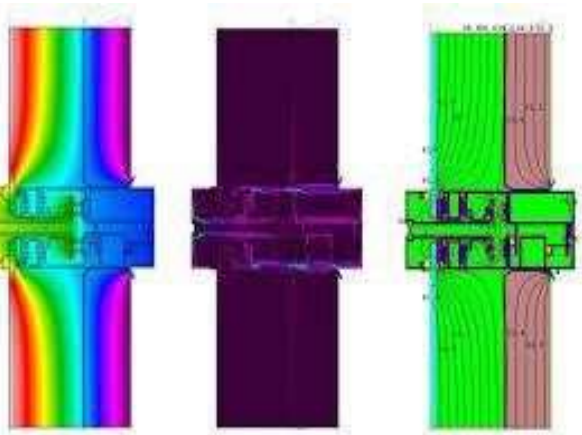
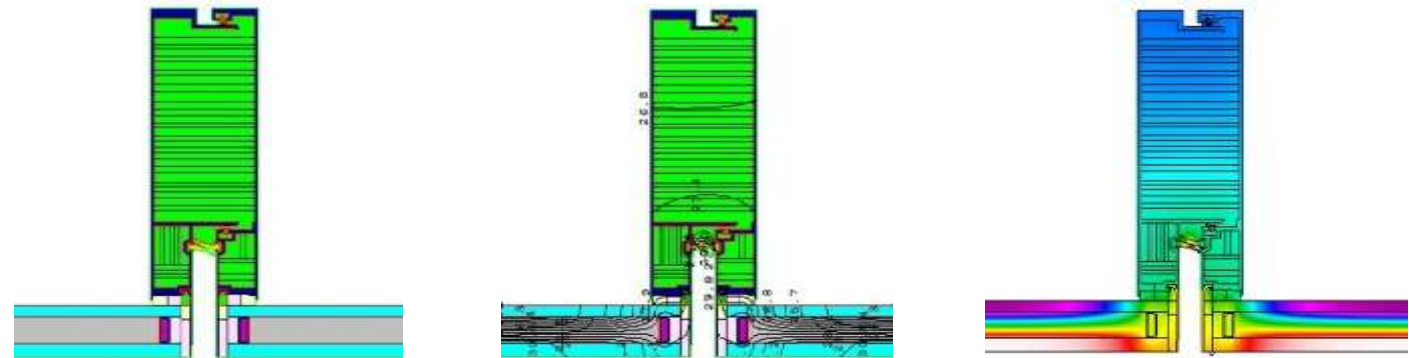
# THERMAL STUDIES

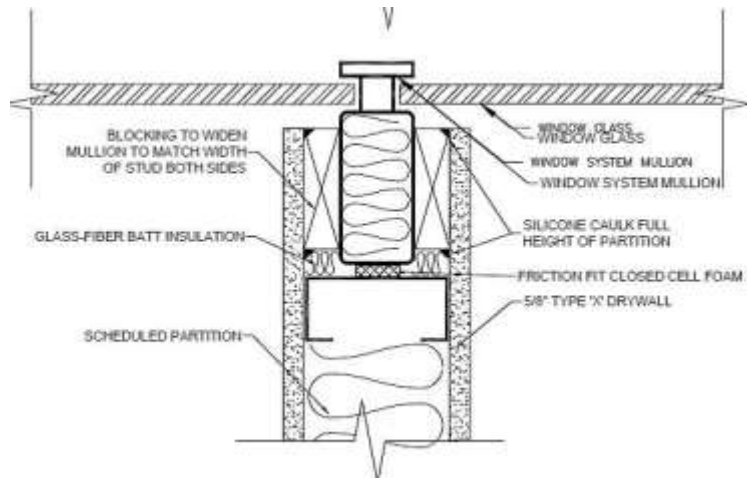
## SYSTEM THERMAL ANALYSIS

The Conceptual Design analysis is to calculate the load due to direct and indirect heat again, internal again. The study is done to find out the good performance system in terms of system Global U value. We conduct both solar and non solar heat again calculation to give total heat transer rate through facade system.

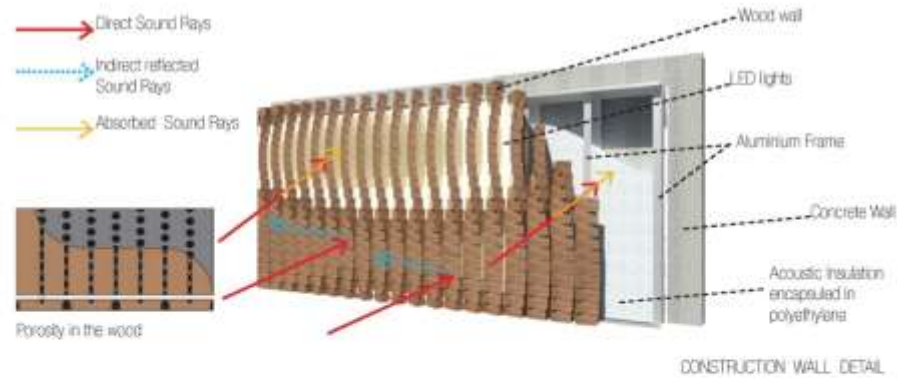
To carry out thermal analyses to EN and US standards, U-Value calculations, condensation and risk assessments to assist the development process. Thermal analysis calculates the temperature and heat transfer within and between components in a design and its environment. This involves the evaluation of the thermal performance of a framework and evaluation of partial or global U values of a building envelope.

The energy efficiency of the façade and the thermal comfort implications have been evaluated considering the ability to pre-heat the ventilation air in the winter season, and the ability to remove part of the solar load during the summer season, the normalized daily energy passing through the façade and the normalized surface temperature of the inner glass were analyzed.





# ACOUSTIC STUDIES



ACOUSTIC WOOD PATTERN WALL

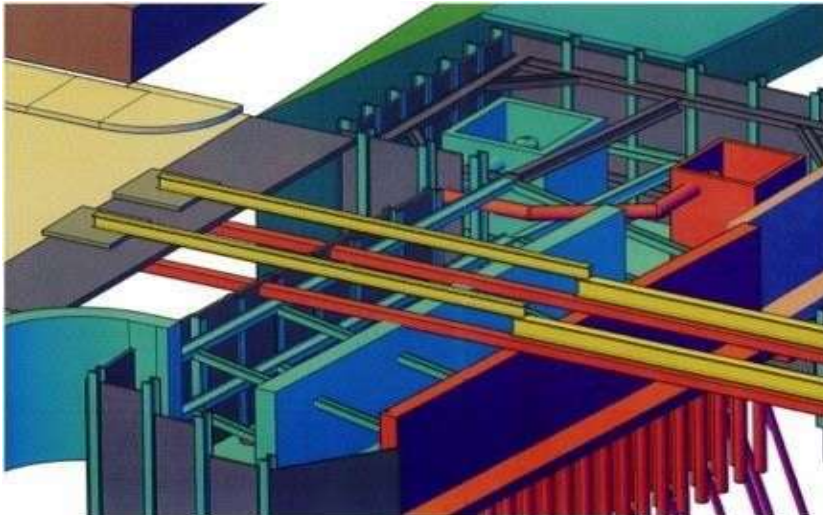
## ACOUSTIC STUDY

To provide an appropriate level of acoustical separation, it requires specific attention to detail.

We study the interaction of the façade and inside of the building. We study, advice, manage projects, monitor installation & issues related to Façade.

- Window Systems
- Glazing system & Material selection
- Cladding Panels in façade
- Ventilation louvers & dry cladding system

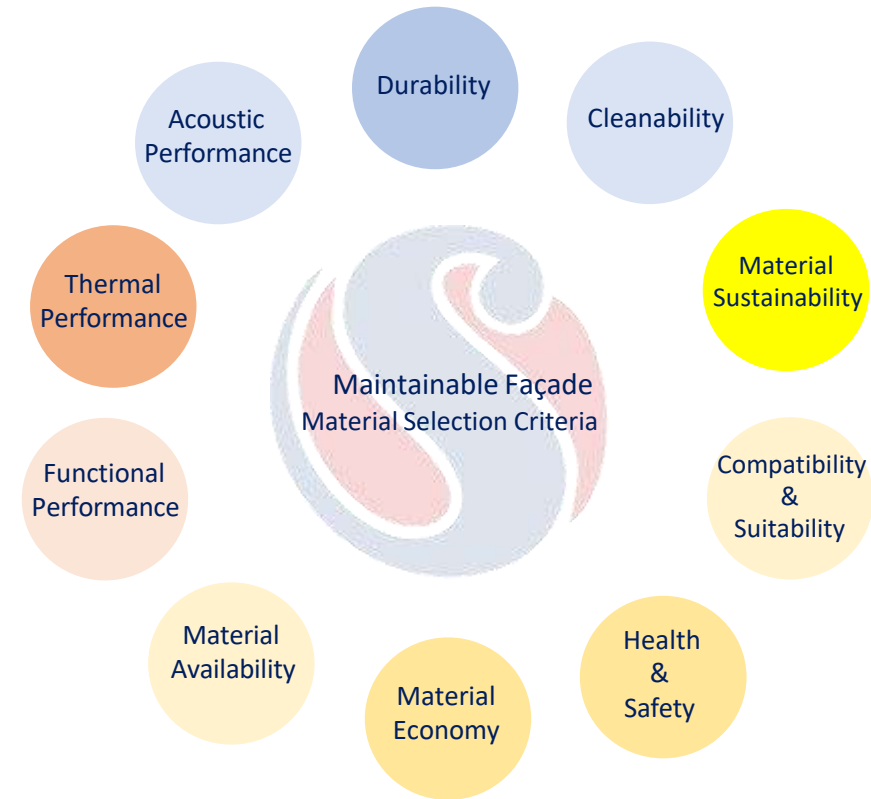




# VALUE ENGINEERING

## VALUE ENGINEERING

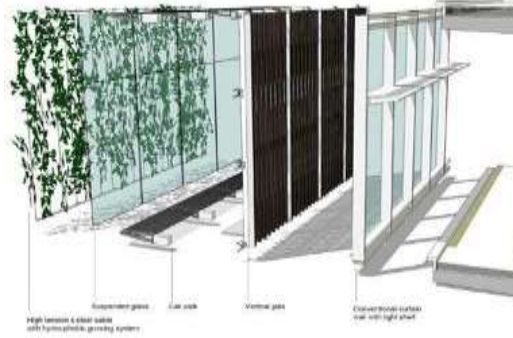
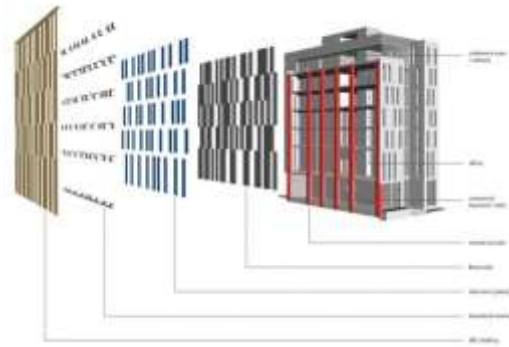
Engineering option solutions to meet architectural whilst retaining structural stability and performance Calculate appropriate design loads to meet service loading requirements, human sensitivities, structural stability and performance. Selection of Materials, Maintenance, and cost to meet the budget whilst achieving Performance and qualitative requirement without comprising on design Objectives. Rationalisation of the Scheme design in collaboration with the architects to reduce the cost rather than the quality or architecture. Specification review & optimisation rather than reduction to achieve a better value, more appropriate product. Design for building in sympathy with the processes downstream including shop drawings, procurement, Manufacture, assembly and construction.

## FACADE MATERIAL SELECTION

Maintainability of building facilities partially relies on the materials selections as their potential to resist defects from common deterioration, ease maintenance and minimise maintenance cost, which is improved throughout their designed life. These initial findings help to provide a review on the maintainability attributes needed during selecting façade material to ensure successful implementation of design maintainability.

- *Material selection in respect with post construction maintainability of buildings*
  - *Material durability*
  - *Health and safety*
  - *Material availability*
- *Functional performance, thermal performance, acoustical performance*
  - *Material economy*
  - *Material sustainability, compatibility and suitability*
  - *Successful implementation of design maintainability.*

## SUSTAINABILITY DESIGN PERFORMANCE

For high-performance building envelope strategies and technical guidelines for designing environmentally sensitive, energy-efficient facades, we base on scientific principles. We provide climate-specific approaches for minimizing energy consumption, analyse thermal behaviour of different facade systems and materials.

- Energy coefficient Design.
- Energy Impact.
- Energy Modelling.
- LEED/IGBC/GREEN Building Strategy Advice.
- Life Cycle.
- Natural Ventilations.



SAHVIA  
*design & beyond*

**RECENT WORKS**

# COMMERCIAL PROJECTS

SKYMARK ONE



CMC



ADVANT IT PARK



SIKKA DOWNTOWN



HQ 27



# COMMERCIAL PROJECTS

EMAAR XCELUS



NCRTC



CRC IT PARK



MAGNUM GLOBAL IT PARK



ACE CAPITOLS



# COMMERCIAL PROJECTS

SAS I-TOWER



PROJECT FERN - MAPLETREE



WORLD TRADE CENTER



RADIAL IT PARK - ASCENDAS



NSL IT PARK



# COMMERCIAL PROJECTS

SAS DOWNTOWN



M1 TRADE TOWER



PANCHSHIL – KHARADI 40



CYBERTHUM





# RESIDENTIAL PROJECTS

EMAAR DIGI HOMES



EPSILON TOWERS



MERLIN TOWER



SIENNA



NATHANI HEIGHTS



EMAAR 62



# RESIDENTIAL PROJECTS

LANCASTER LEGACY



CADIVI



LANCASTER LUMINAIRE



# HOSPITALITY PROJECTS

M3M



JABALPUR RAILWAY JUNCTION



ELAN MIRACLE



ELAN EPIC



# HEALTH CARE PROJECTS

AIIMS HOSPITAL - DEOGARGH



AIMS HOSPITAL



AIIMS HOSPITAL - JAMMU



# HOSPITALITY PROJECTS

KING CROWN INFINITY



DETECH TOWERS



KRISUMI



CT-10

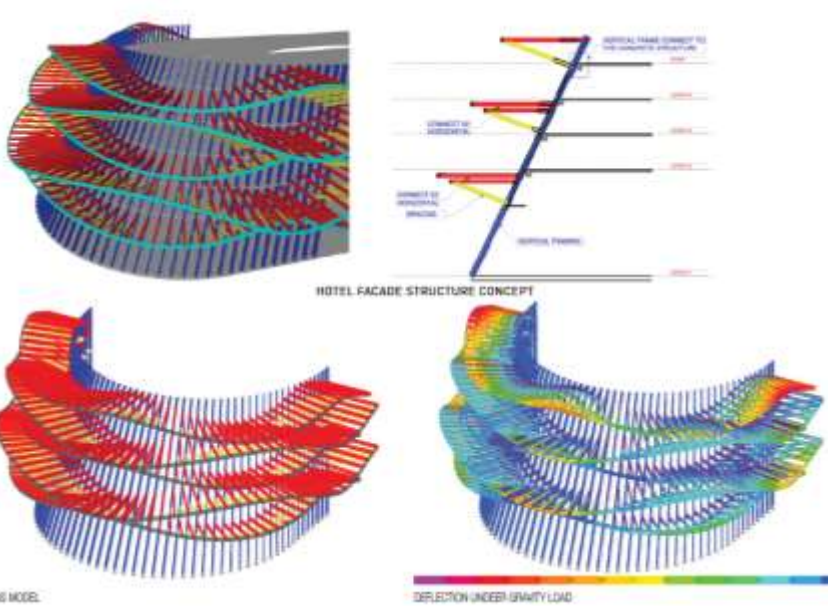


AN HAI HOTEL



# HOSPITALITY PROJECTS

FAIRMONT





SAHVIA  
*design & beyond*

LIGHTING DESIGN SERVICES



INTEGRATED  
CUSTOMIZED  
SOLUTIONS

# LIGHTING

## LIGHTING CONSULTANCY

*Achieving Lighting Design with minimalism, apply of aesthetically - lit materials, effective cost. Design lighting for facade, interior and landscape. Engineering lighting, New technology, Lighting 3D mapping, Dancing Waters, Lighting and Fountain, Pixel Mesh, Digimeg, ...*

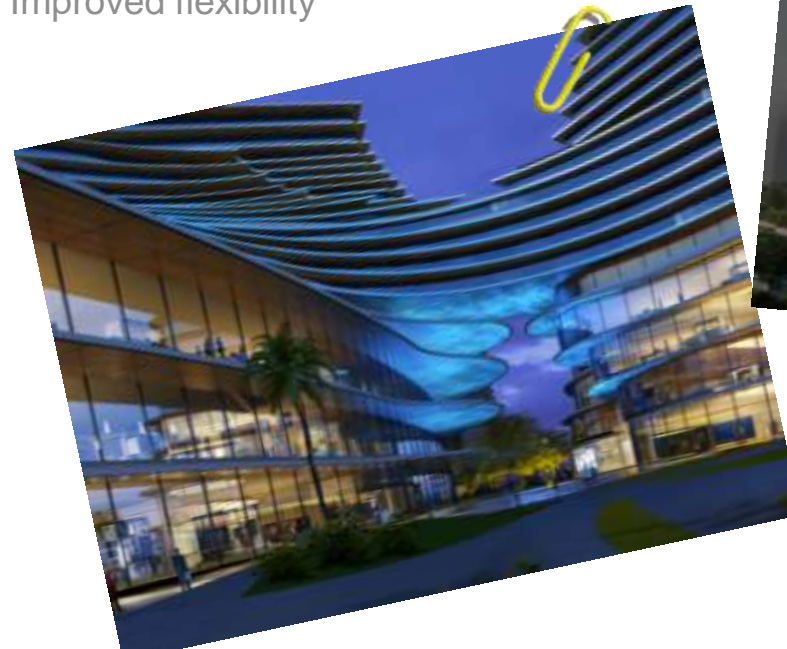
**Concept Stage:** Final Concept Presentation (PPTX), hi-res renders, clip if required, preliminary total budget and energy consumption

**Design Development Stage:** *Luminaires Selection, Specification Sheet, BOQ Preparation, Cost Estimated based on client's approval, A set of Approved Lighting Layout Drawings, Power Supply Locations, loads and interface details, fixture fixing details.* **Tender Documentation Stage:** *Report of Evaluation and Recommendation* **Testing and Commissioning Stage:** *Testing and Commissioning Report*



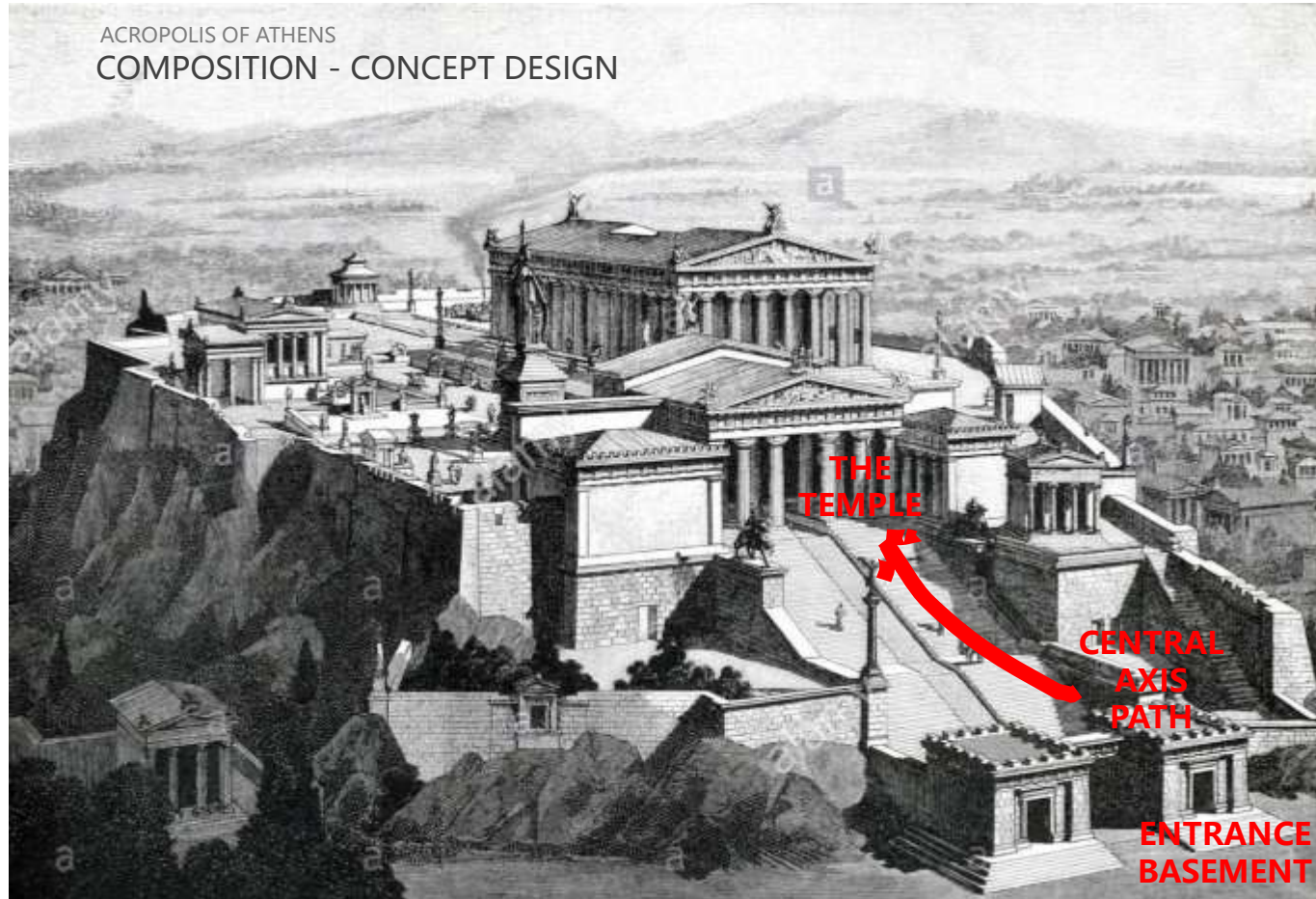
# LIGHTING CONCEPT HIGHLIGHTS

- Illusion of space
- Increase productivity
- Improved flexibility



# INSPIRATIONS

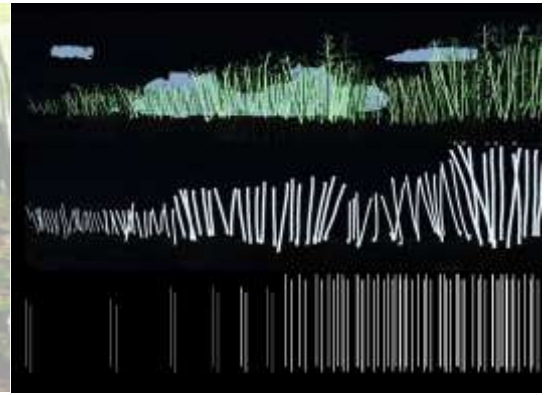
ACROPOLIS OF ATHENS  
COMPOSITION - CONCEPT DESIGN



INSPIRATIONS



BEYOND  
IMAGINATION





# FACADE

- Solid facades
- Vertically divided facades
- Horizontally divided facades
- Perforated facades



# LANDSCAPE

- Accent or Spot Lighting
- Grazing
- Shadowing
- Silhouetting
- Pool and Fountain Lighting
- Up lighting
- Moonlighting





# INTERIOR

- Ensures optimal colour management
- Improves functionality and serves a purpose
- Aids in creating illusion of space



illumination Level  
Uniformity & Ration  
Glare Levels  
Color & Reflectance  
Energy Efficiency





SAHVIA  
*design & beyond*

**RECENT WORKS**

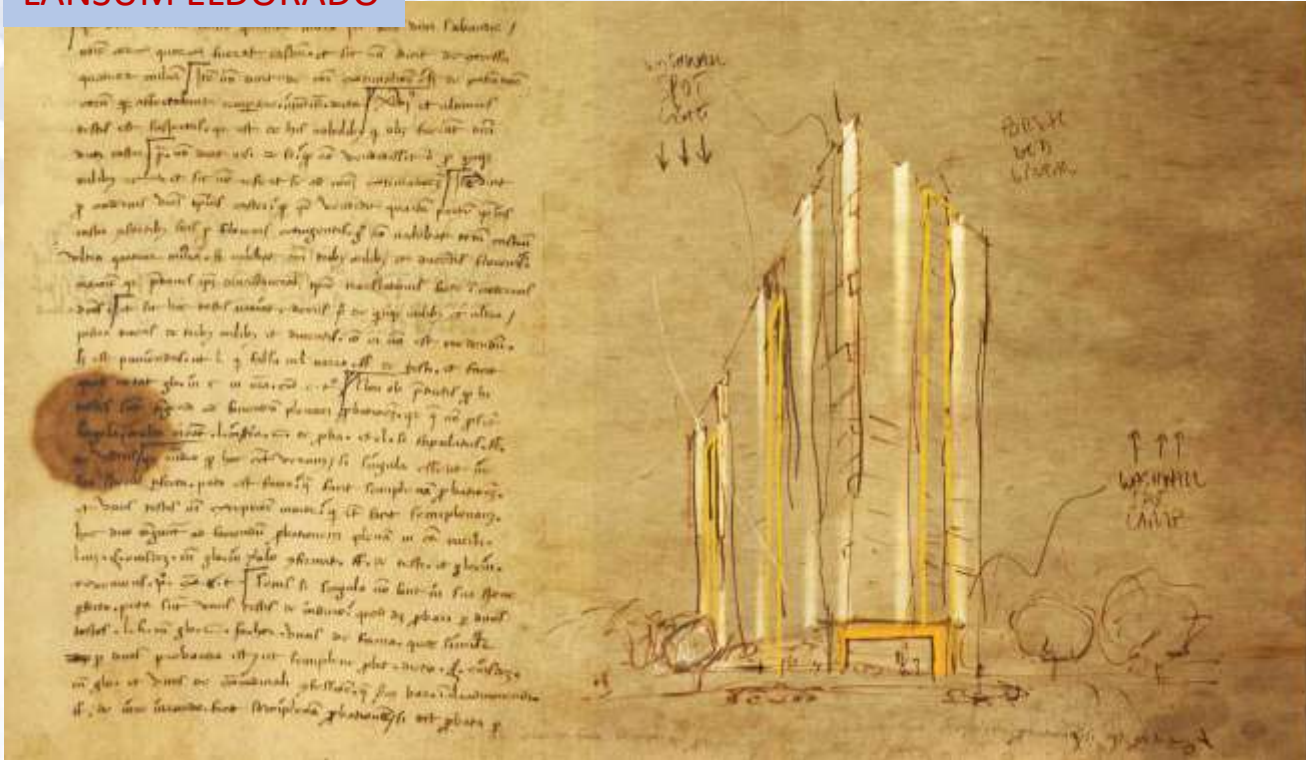
# FAÇADE LIGHTING PROJECTS

KING CROWN INFINITY



# FAÇADE LIGHTING PROJECTS

## LANSUM ELDORADO



# FAÇADE LIGHTING PROJECTS

EMAAR 62



EMAAR COLONNADE

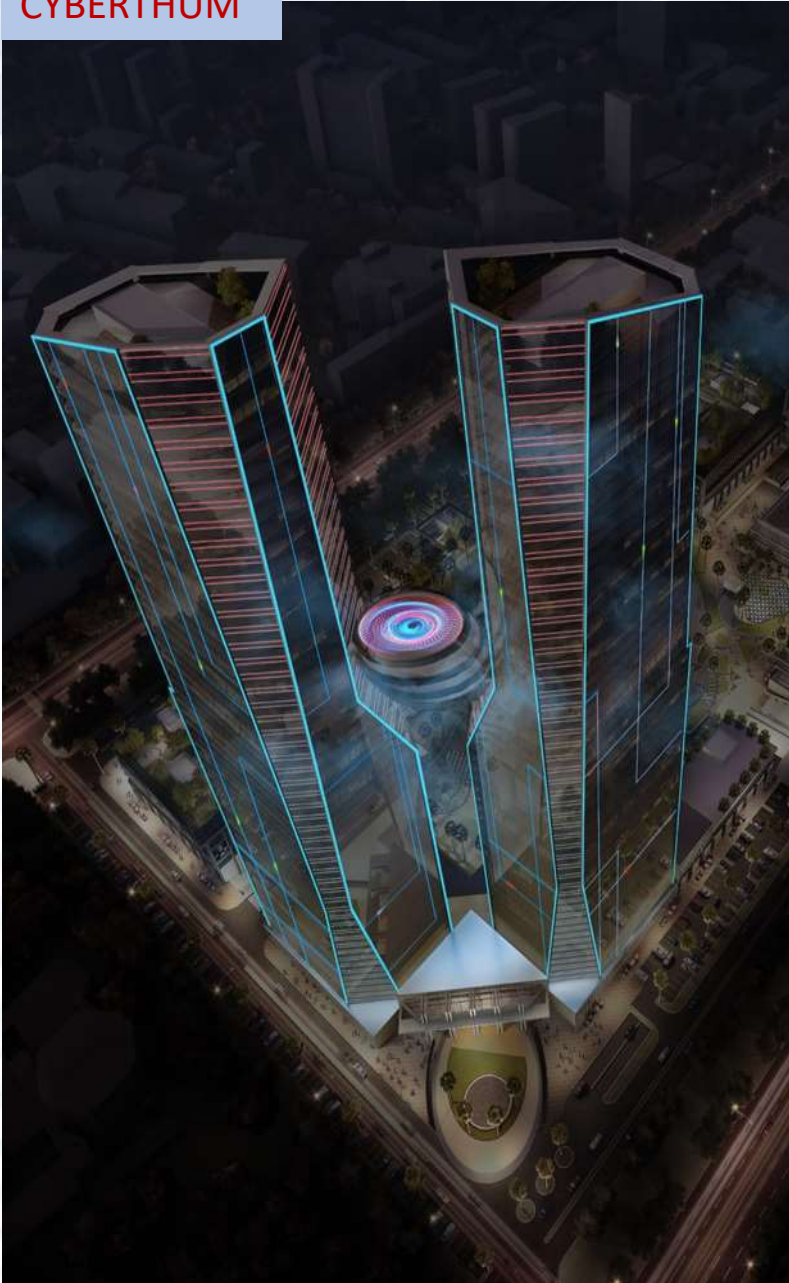


EMAAR DIGI HOMES



# FAÇADE LIGHTING PROJECTS

CYBERTHUM



ADVANT IT PARK



ACE CAPITOL



WINDSOR GRAND



# FAÇADE LIGHTING PROJECTS

CAP SAINT JACQUES



VINHOMES GRANPARK



SUN BAY PARK



IRIS



# FAÇADE LIGHTING PROJECTS

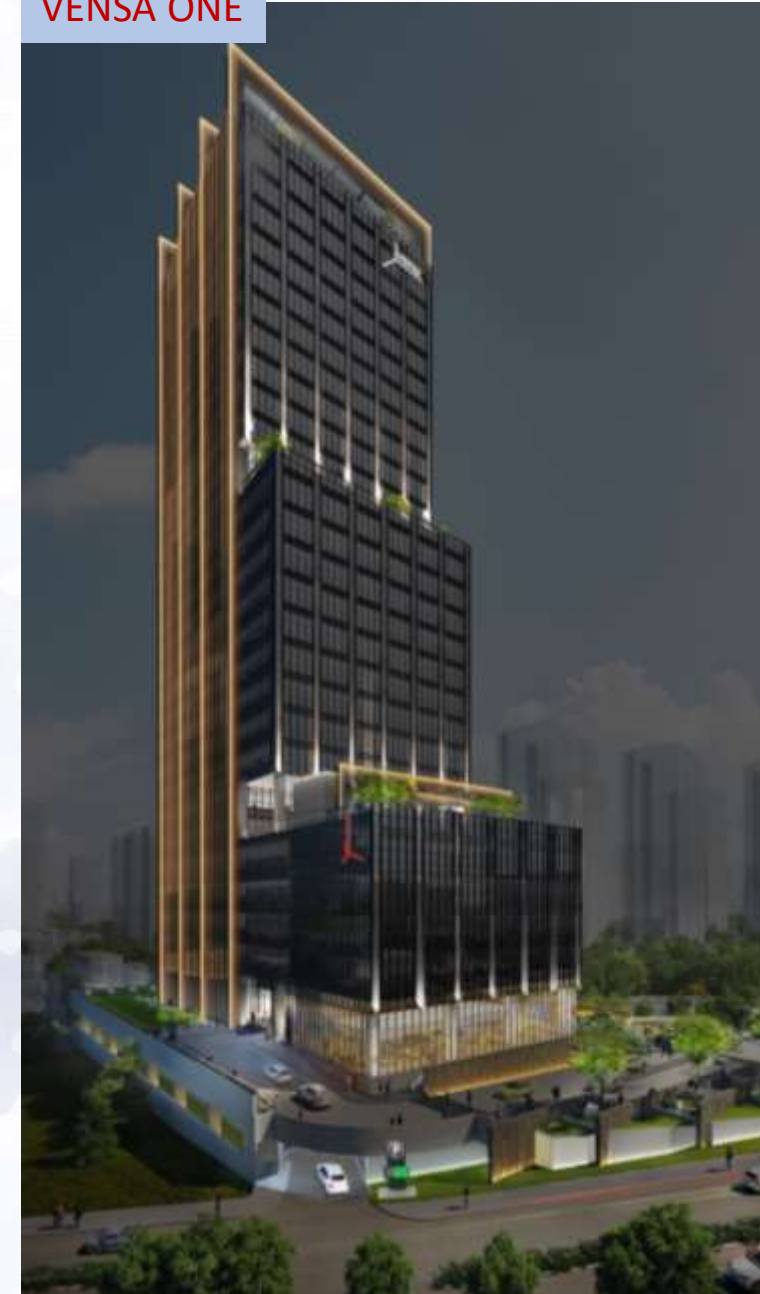
VIN PEARL HOTEL



HON TRE



VENSA ONE



DWIGHT UNIVERSITY



# FAÇADE LIGHTING PROJECTS

CANDOR TECT SPACE



MAHAVEER GATEWAY





# LANDSCAPE LIGHTING PROJECTS

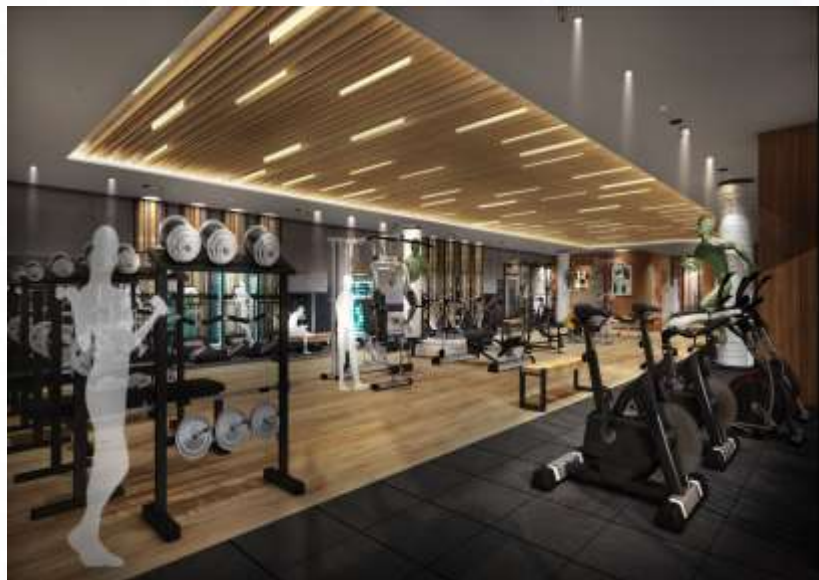


# LANDSCAPE LIGHTING PROJECTS



# INTERIOR LIGHTING PROJECTS

## APARNA MEADOWS





SAHVIA  
*design & beyond*

**SIGNGAGE AND WAYFINDING SERVICES**

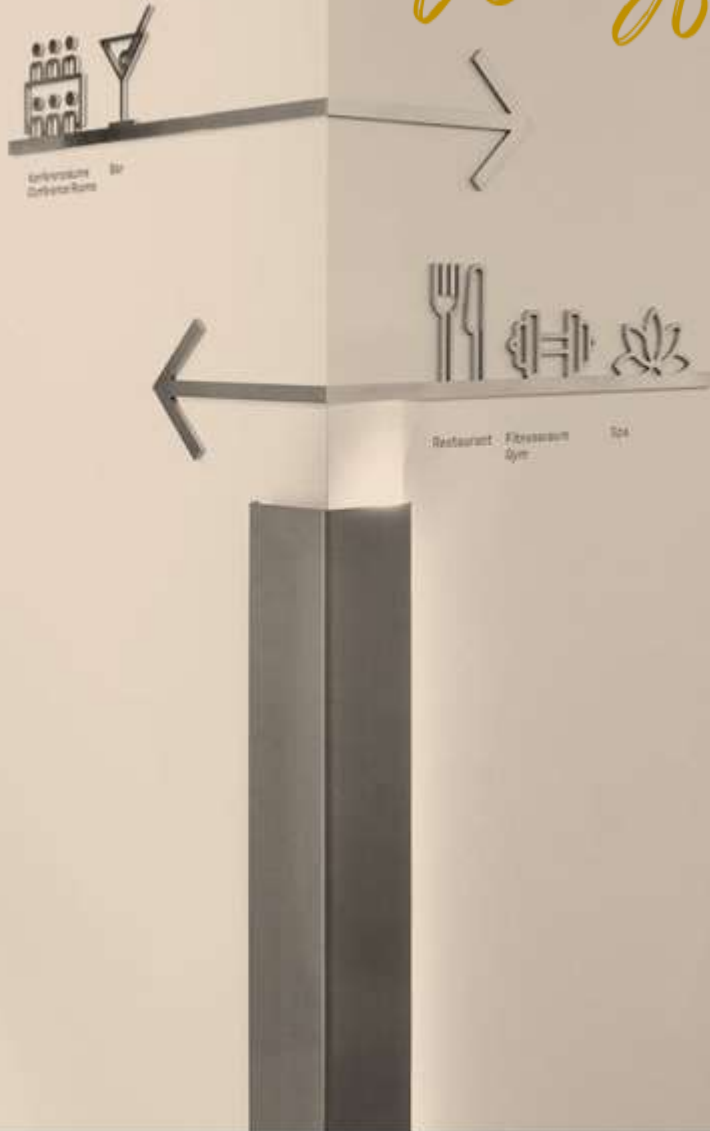


# *Signage Design*

*Signage is the design or use of signs and symbols to communicate a message. Signs are any kind of visual graphics created to display information to a particular audience, and we, at Sahvia, always keep the Users in mind while complementing our Clients' Architecture, Identity, and Brand.*

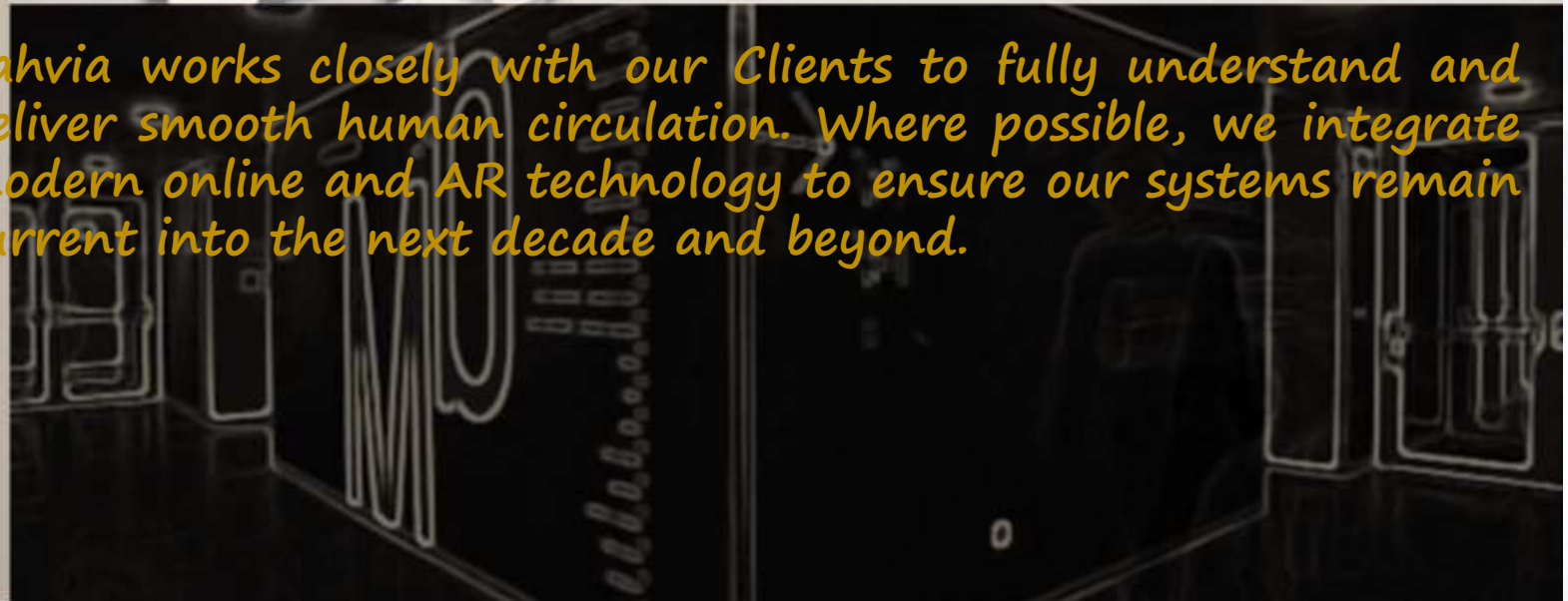
*Our Team is passionate about what we design and push ourselves to give our Clients well-thought-out original concepts and ideas that work well with their branding team.*

# Wayfinding Design



Our wayfinding strategies have always had one goal: To direct people logically and efficiently. Our definition for excellent wayfinding systems is having people successfully navigate their way without ever noticing their reliance on the signs in place.

Sahvia works closely with our Clients to fully understand and deliver smooth human circulation. Where possible, we integrate modern online and AR technology to ensure our systems remain current into the next decade and beyond.



The background features a collage of construction-related elements. At the top left, a sign with a black and white striped border contains the text "UNDER CONSTRUCTION". Below this, there are various safety icons: a lightning bolt in a triangle, a person slipping in a triangle, a person being struck by a falling object in a triangle, a general warning triangle with an exclamation mark, a hard hat in a circle, a pair of safety boots in a circle, a pair of work gloves in a circle, and a person wearing a hard hat and ear protection in a circle. In the middle row, there is a circular sign with a white horizontal bar, a diamond-shaped sign with crossed wrench and screwdriver, a person wearing safety glasses in a circle, a person walking in a circle, a hand with a slash through it in a circle, and a circular sign with the number "25". At the bottom, there is a sign with a white horizontal bar and the text "UNDER CONSTRUCTION" below it, and a pair of safety boots in a circle. The overall theme is construction safety and signage.

UNDER CONSTRUCTION

# Construction Monitoring

A Signage Design will remain just a drawing until it is constructed. A functioning sign with a flawless finish can take on life with proper construction, familiarity with the locality and soft skills in working with local and international professionals on the job.

These management skills are what makes Sahvia a sought-after Team from the approval of our designs to the bidding stage. Our detailed monitoring and reporting practices from many years of experience in multi-use large scale projects, sets us apart from many similar firms.

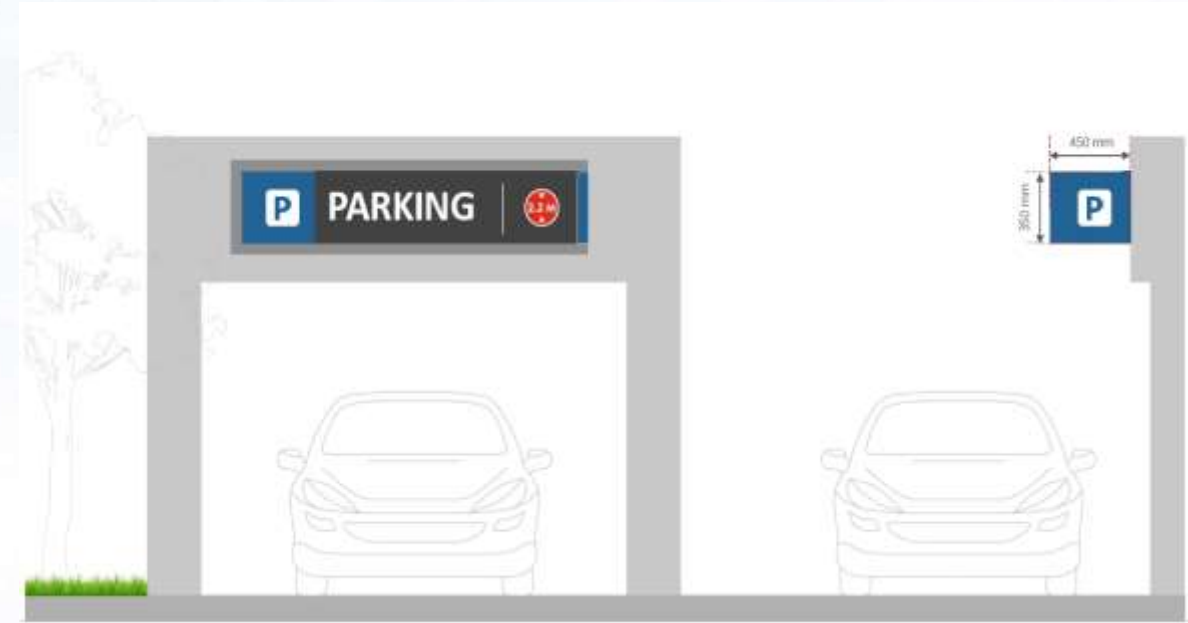


SAHVIA  
*design & beyond*

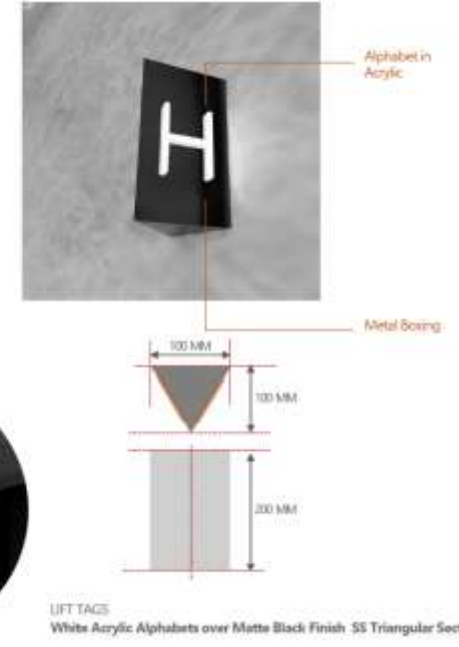
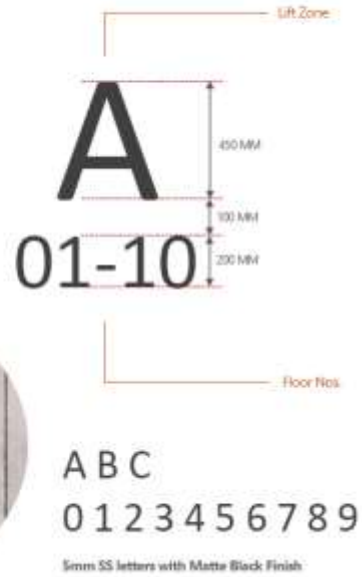
**RECENT WORKS**



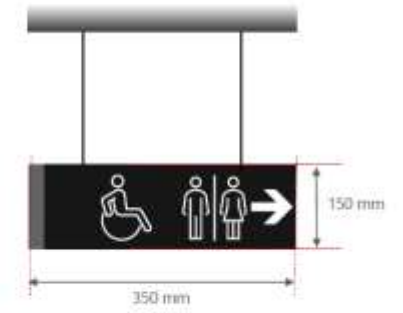
# SIGNAGE, WAY FINDING AND BRANDING PROJECTS



# SIGNAGE, WAY FINDING AND BRANDING PROJECTS



Symbols over Plate (Design to be as/approval)  
5mm SS Plate with Matte Black Finish + Digital UV Print



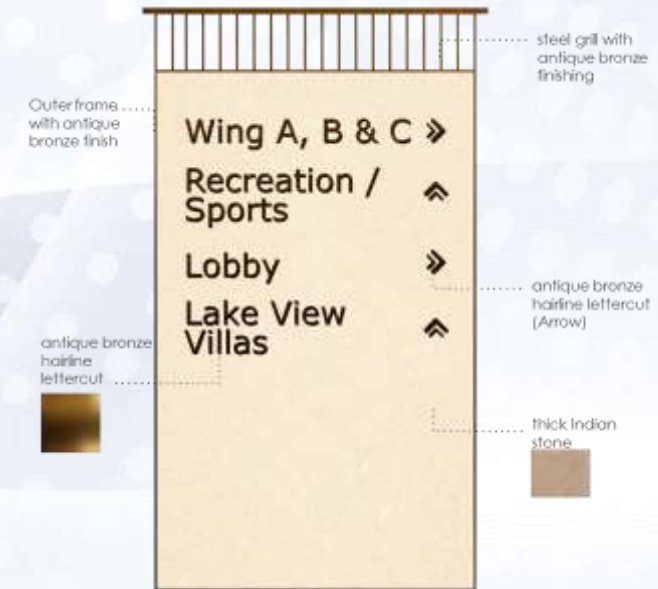
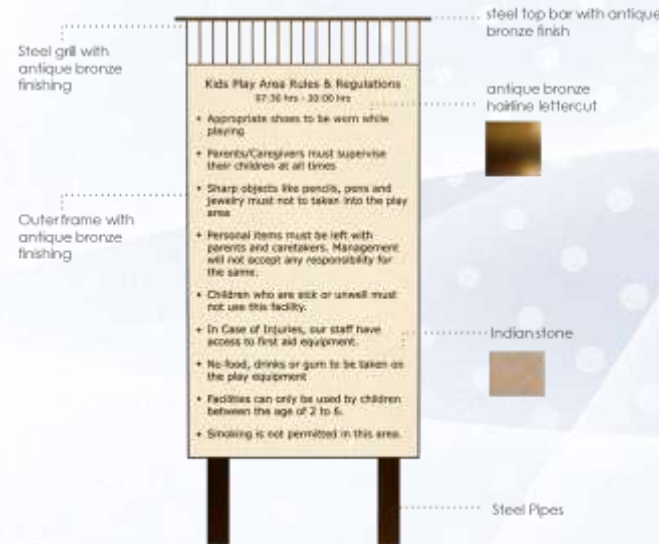
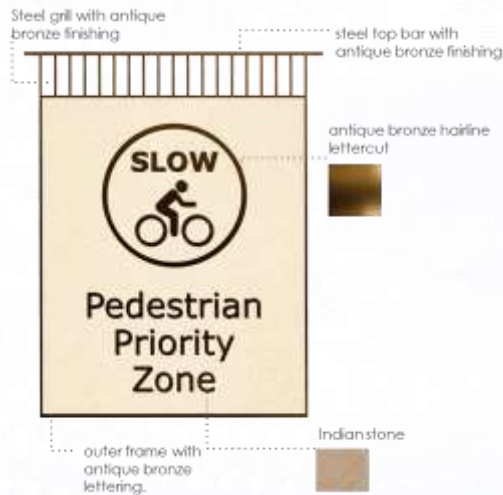
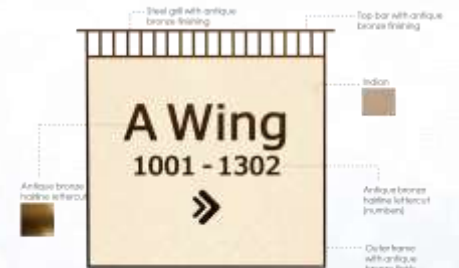
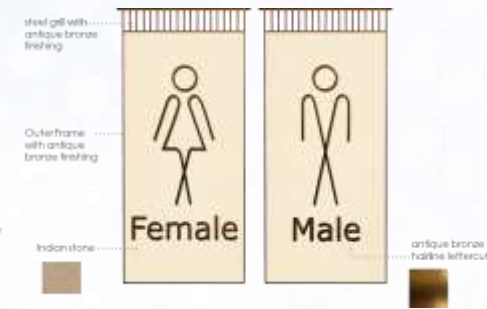
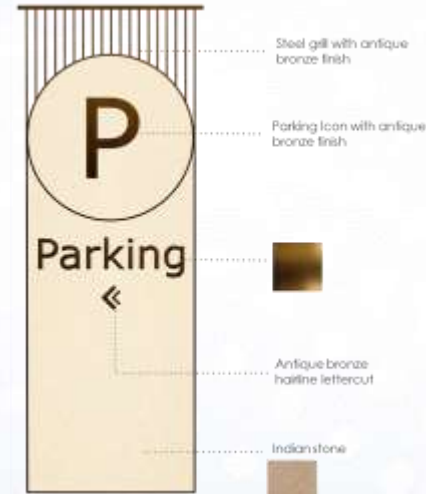
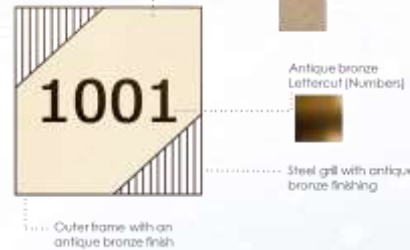
# SIGNAGE, WAY FINDING AND BRANDING PROJECTS



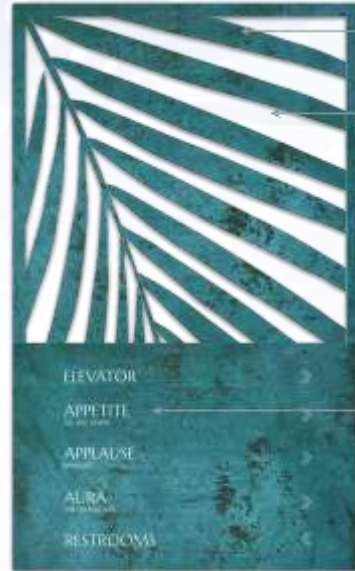
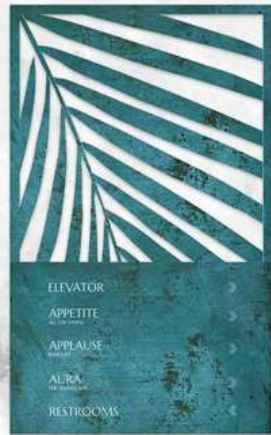
# 17 DEGREES NORTH



# SIGNAGE, WAY FINDING AND BRANDING PROJECTS



# SIGNAGE, WAY FINDING AND BRANDING PROJECTS



Laser cut Palm leaf motif

15mm thick Metal with Patina Finish



5mm thick letter cut out with silver hairline finish



Laser cut Palm leaf motif

15mm thick Metal with Patina Finish

5mm thick letter cut out with silver hairline finish



5mm thick letter cut out with silver hairline finish



15mm thick Metal with Patina Finish

Laser cut Palm leaf motif



Laser cut tree & birds in metal with patina finish



Laser cut tree & birds in metal with patina finish

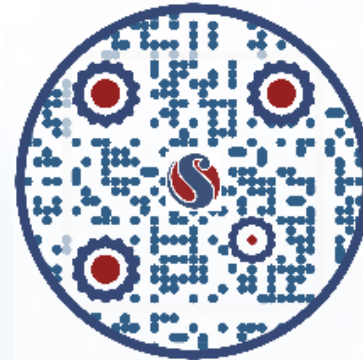


3D Metal Letter cut raised with pantone specific paint finish,



AMORAVIDA  
by 7UPPLE RESORTS

SAHVIA  
*design & beyond*



Phone: +966 13 8575913/8578540/85736340  
Fax: +966 13 85736340  
Email: [mail@sccksa.com](mailto:mail@sccksa.com)